

estate agents **auctioneers**

**hollis
morgan**

h
Holiday Inn

314, 51:02 St. James Barton, City Centre, Bristol, BS1 3LY
Offers In Excess Of £270,000

Hollis Morgan - A spacious (1100sq ft) modern apartment with allocated parking, situated in an established purpose built development in the heart of the City Centre

- Two Double Bedrooms
- City Centre Location
- Large Open Plan Living Space
- Concierge Service
- Secure Allocated Parking

• Chain Free

The Property

Located within a landmark building within the city centre, this 3rd floor contemporary apartment is finished to a very high standard throughout and is sure to be of interest to first time and investment buyers.

The open plan split level living space is surprisingly large and two full height windows allow for lots of natural light due to the southerly aspect as well as views over the City.

The kitchen, although open plan, is separate from the main living space and has been fitted with modern wall and base units with a laminated work top as well as a stainless steel sink with mixer tap, electric hob and oven with extractor over.

There are two generous double bedrooms with the master benefiting from built in wardrobe and en suite shower room and a modern bathroom suite.

Further benefits from the property include concierge service, lift access and a secure underground allocated parking space.

Location

The Centre is the heart of the City with constant action on offer from the Hippodrome and Colston Hall, Bristol Shopping Quarter at Cabot's Circus to the characterful Christmas Steps, Corn Street and St Nicholas Market. Nearby Millennium Square acts as a gateway to the neighbouring harbourside with its fountains and big screen as well as world class attractions such as Brunel's SS Great Britain, We The Curious, Bristol Aquarium, the Arnolfini, Spike Island, the Watershed and the M Shed.

Other Information

Leasehold. Residue of 999 years

Ground Rent: £150 pa

Management Fee: £3,758 (includes water)

Council Tax Band: D

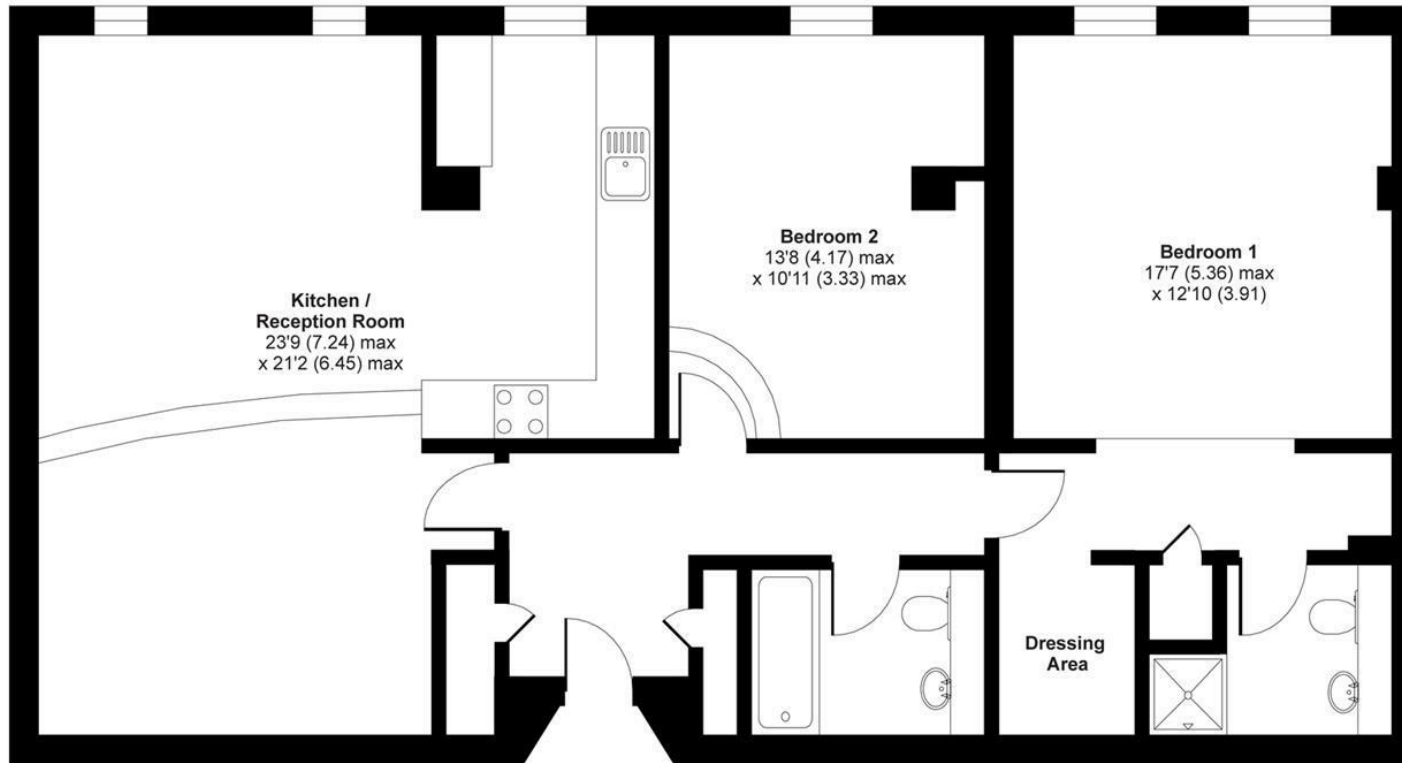
Please Note

We endeavour to make our sales details accurate and reliable but they should not be relied on as statements or representations of fact and they do not constitute any part of an offer or contract. The seller does not make any representation or give any warranty in relation to the property and we have no authority to do so on behalf of the seller.



St. James Barton, Bristol, BS1

APPROX. GROSS INTERNAL FLOOR AREA 1101 SQ FT/120.3 SQ METRES



THIRD FLOOR

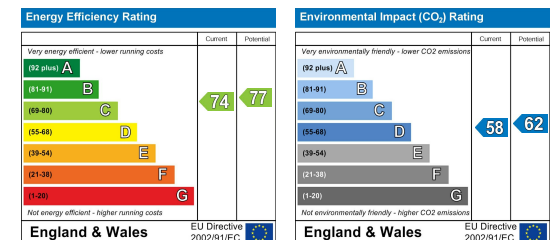
Whilst every attempt has been made to ensure the accuracy of the floor plan contained here, measurements of doors, windows and rooms are approximate and no responsibility is taken for any error, omission or misstatement. These plans are for representation purposes only as defined by RICS Code of Measuring Practice and should be used as such by any prospective purchaser. Specifically no guarantee is given on the total square footage of the property if quoted on this plan. Any figure given is for initial guidance only and should not be relied on as a basis of valuation.

Copyright nichecom.co.uk 2019 Produced for Hollis Morgan REF : 508313

TEL | 0117 933 9522 | 9 Waterloo Street, Clifton, Bristol BS8 4BT

www.hollismorgan.co.uk | post@hollismorgan.co.uk

Hollis Morgan Property Limited, registered in England, registered no 7275716
Registered address, 5 Upper Belgrave Road, Clifton, Bristol BS8 2XQ



hollis
morgan
